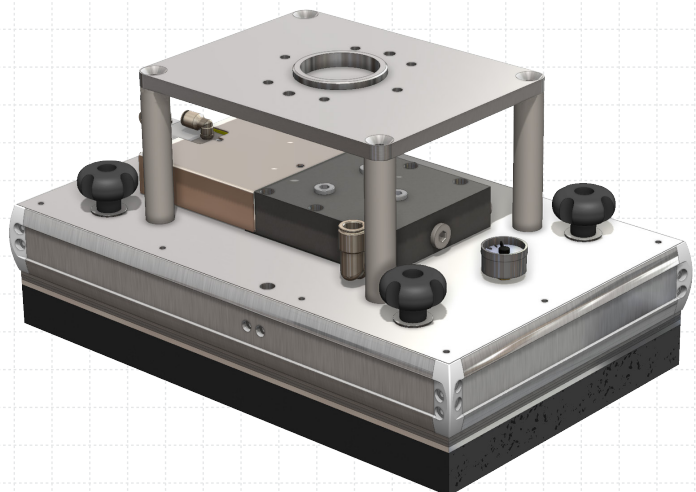


Robot spacers are used to make the installation of the UniGripper as easy as possible. In addition to providing an interface tailored for the customers robot, a robot spacer may also be used to increase the distance between the robot and the gripper and thereby overcome space constraints. The robot spacer will be designed in different ways depending on type of gripper and how much payload the spacer is designed to withstand. The most common designs of the robot spacer are either a reel design, where the spacer is either made of welded mild steel or milled out of a solid block of aluminum, or a pillar design where an aluminum plate is attached to the UniGripper head with pillar spacers at selected locations.



*Reel design*



*Pillar design*